



HILL COUNTY ELECTRIC NEWS & VIEWS

November 2023



1.877.394.7804  
hillcountyelectric.coop

How Does Inflation Affect Your Electric Bill?



Craig Gates
General Manager/CEO

Inflation impacts everything from the price of gasoline to the price of food. We can all identify items where costs have gone up significantly in the last two years. We would be hard-pressed to think of an item that costs the same as it did three years ago

or even a few months ago. HCE tries hard to keep the costs down. The increases we see in power and materials are not something we have any control over.

Allow me to share some examples of the increase in costs HCE has experienced:

- Single phase transformers increased 155% since 2019
- Poles increased 165% since 2019
- Underground Primary Cable increased 156% since 2019.

As you can see, the prices for items we need to keep electricity flowing to our members have increased drastically. This includes software needed for meters and our billing system. We try our best to keep costs

low, but as inflation rises the costs from our power provider and vendor partners do as well. The result is an increase in cost of service we provide to our membership. It has become more difficult for the cooperative to absorb some of these cost increases.

We continue to serve our members, install new services, and complete upgrades throughout our service territory. The costs to operate your cooperative are at an all-time high. As management of your cooperative, we fight every day to keep costs under control and the board is looking to keep rates affordable and power reliable well into the future.

HCE's last rate increase was in April 2016. If HCE must raise our rates, HCE will keep them as low as possible and still supply the best reliable power that we can. HCE has hired a company to analyze our rates and rate structure. We look forward to reviewing those results by the end of the year. HCE has discussed three-part rates for several months in this publication, which is another way to look at how HCE applies our rates to you, our members. As HCE goes forward, we will keep you informed. If HCE raises rates, it would not be until late spring or early summer of 2024. So, keep reading this magazine to keep informed and up to date on what is going on at HCE.

As always, please stay safe and stay healthy!

Ezra Goldhahn

Thank you, Hill County Electric Cooperative and its members, for a fantastic trip to Washington D.C. Without the members' support, this precious opportunity for local youth to experience our nation's capital would not be possible. The chaperones also did an excellent job ensuring that each day was unique and that we all found it fun and educational. My memories of the trip will not be forgotten anytime soon.



Now I would like to address local high schoolers whether you are considering applying or not. When I first heard about this opportunity, I wasn't sure what to think. It is no secret that I find very little joy in writing essays, in fact, kind of despise doing so. However, my Dad finally convinced me that I should write the essay and apply. I must admit that I was quite surprised the following January when I got called to the office and informed that I was going to DC in a few months. I would like to conclude by saying throughout high school you are required to write numerous essays simply to get good grades

Reinhard Bold

In early June, I was given the honor of representing Hill County Electric on the annual Washington DC Youth Tour. We visited renowned national monuments, historic museums, the home of our first president, and were given the opportunity to meet and ask questions of Montana's senators and representatives. I especially enjoyed touring the National Museum of the Marine Corps and the Lincoln Memorial.



I was able to meet and visit with youth from across the United States that share many of the small-town values that we appreciate in Montana and also see a glimpse of what living in a big city is like.

Through this experience, I developed a more in-depth understanding of cooperatives and just how important they are to sustaining rural communities, especially in agricultural areas. I would like to thank Hill County Electric for sponsoring my trip. It was an event-filled week that allowed a small-town farm kid the opportunity to see and experience our nation's historical sites and network with youth from across the country.

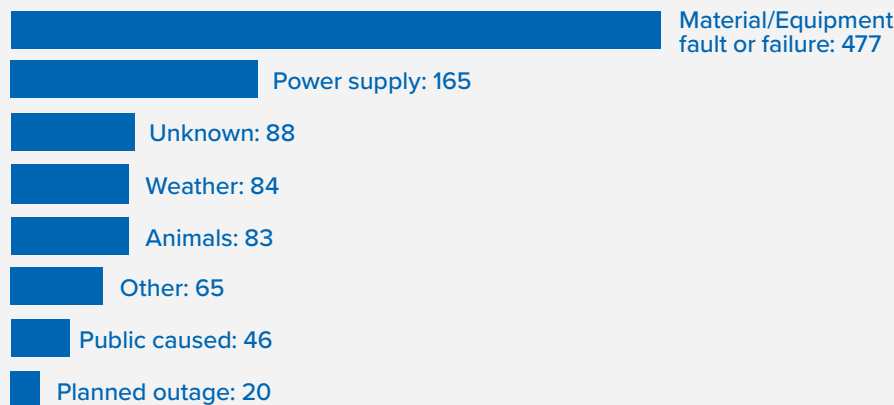
What is the move over law in Montana?

Under Montana Code 61-8-346, drivers must:

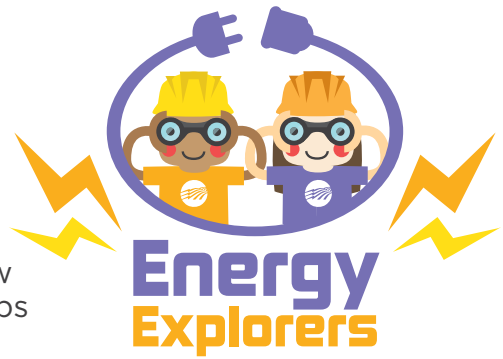
1. Vacate the lane closest to the emergency vehicle, if safe to do so
2. Slow down by a minimum of 20 mph below the posted speed limit on

HCE Happenings

Last month, Hill County Electric (HCE) had approximately **1028** account



THE STEPS TO RESTORING POWER

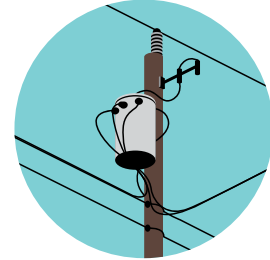


When the power goes out, line crews work hard to restore electricity as quickly and safely as possible. To ensure the process is done efficiently, line crews follow specific steps to restore power. Can you order the steps below to match how power is restored?

Hint: Check your work in the answer key.

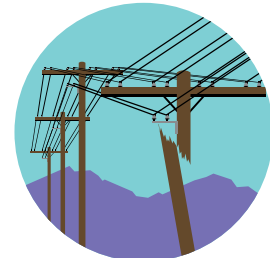
STEP

Tap lines are inspected. These lines deliver power to transformers that are either mounted on utility poles or placed on pads for underground electric service.



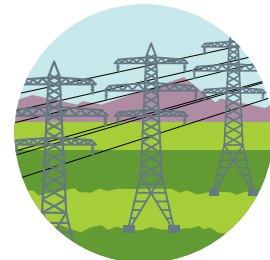
STEP

Distribution power lines are inspected. These are the lines you typically see on the side of the road that deliver power to communities.



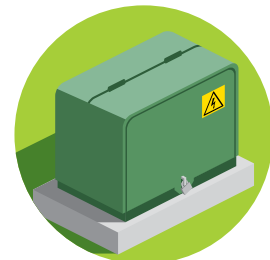
STEP

Large, high-voltage transmission lines are inspected for damage. These power lines deliver large amounts of electricity over great distances.



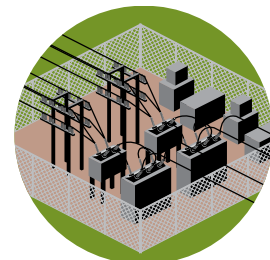
STEP

Service lines are inspected. These are the power lines that run **between the transformer and your home**.



STEP

Distribution substations are inspected. These facilities lower the voltage of power, then send power to distribution lines.



Swap and Shop

Welcome to our Swap and Shop! Feel free to post and find classifieds from other members! Ads submitted online are usually added within 2 to 3 business days.

Due to print deadlines and space available, some ads may appear in the next month's magazine.

*Denotes photo available on website

Wheat Straw Bales

Small square wheat bales, out of conventional combine. \$5 per bale, located just a few miles north of Havre, MT. Limited quantities available. Please call/text 406.230.2281.

Stained Glass Set Up

Two grinder, more than 50 lbs glass, misc. tools, foil, solder, etc. \$250, call 406.861.3885.

Metal Swing For Sale

Metal swing set with slide and quart canning jars. Call 406.379.2695, leave a message with name and number.

7Up Refrigerated Cooler and more

Nice original 7up soda pop refrigerator cooler out of an old grocery store, asking \$650. Also have Cushman scooter parts for sale. Firebird original snowflake wheels, \$350.00. Call 406.350.1392.

Craftsman Zero Turn Mower

42", 22 HP, 130 hours, rear bagger. Asking \$1,800, call 406.378.3122.

Boys Bike and Misc For Sale

Boys bike, needs tire repaired, \$100. Brown barrel chair, \$129. Lowry Holiday Organ, Yamaha Digital Piano, \$500. Call 406.366.4625.

2005 Crestliner 1950 Sportfish*

Purchased new in 2009, one owner. Includes a boat cover, 200-horsepower Mercury Motor, one 9.9 Mercury Kicker motor, a 24-volt trolling motor, and 2 depth finders. Many accessories included. Call 406.262.4015 or see in person at 700 Cleveland Road.

In Search of Pickups and Parts

1949 to 1959 Chevrolet or GMC 1/2 ton pickup or just parts. Call 406.326.2287.

Sanger Speedboat

Sanger Speed boat with 440 Chrysler engine. Asking \$5,500 or best offer. Call Lenard at 406.378.2572.

2016 Starweld Boat

18 Pro Merc 150 (20 hrs) Merc 9.9 kicker, minn-kota troll, 4 seats, ram mount rod holders, bimini top, travel cover, shorelander trailer. Asking \$32,000, call 406.566.2426.

1980 Case 446 Tractor

1980 Case 446 tractor 2 cycle, 16hp, hydro with 48-inch mower. New battery, stored indoors, nice tires, set and paint. Call Mike at 406.374.2458.

1979 CJ5 Jeep with winch

1979 CJ5 Jeep with winch, steel cab and roll bar. New tires, battery, starter, fuel pump and windshield. Runs good. Also 1989 Dodge short box V8 auto. All original, great shape with seats and carpet in excellent shape. Very hard to find one like this, runs great. No rust 87K, 2nd owner. 1980 Case 446 tractor with 46 inch mower and hydro, 16 hp. Good tires and paint, always indoors, \$1,500. Call 406.350.1392.

Whole & Half Pork For Sale

Farm raised in Havre, processed at the Saco Pay and Save. Processing in June and October. Whole \$450 plus processing and half is \$250 plus processing. You receive approx. 150 lbs of meat per whole hog. I deliver processed meat locally and area between Saco and Havre on pickup day. Contact Twyla at 406.230.2281 (text or call). Also on Facebook.

Hunting Lease Wanted

Respectful, honest group of sportsmen seek long-term yearly hunting lease for elk, deer and other game. Willing to compensate a landowner well for premier hunting. We will work with landowner to manage game and allow period(s) for landowner and family to hunt. Contact David at 406.263.2133, serious inquiries only.

Tires For Sale

Four 33x12.50R17 General Grabbers at 95% on black aluminum rims, 5x5.5 bolt pattern. Asking \$1,200, call 406.566.2274.

1955 Ford 600 Series Tractor w/Ford loader

Does not run but not seized, good tins. Asking \$1,500. Call 406.566.2274.

1985 Ford F150

4x4 1985 Ford F150 4x4, 300-6, 4 speed, good body, very little rust, front dif bad but have used one for replacement. Parked because of starter/solenoid issue 12 years ago. Asking \$5,000, call 406.566.2274.

1967 Ford F100

1967 Ford F100 4x4, 360, 4 speed, upgraded front and rear difs, power front disc brakes, very little rust, 2-inch front lift. New 235 8SR16 tires on new white spoke wheels. Runs great but leaks oil and water. Located in Stanford, asking \$10,000. Call 406.566.2274.

Boat and Motors for Sale

11-foot aluminum boat with 2 outboard motors, a 6hp two-stroke outboard motor, and a 2 hp two-stroke outboard motor. Includes fuel tank and oars. Best offer, call 406.669.3333 (no texts, landline only please).

Dutchman 5th Wheel Toy Hauler

Two slides, generator, microwave, roof air, 10-foot walled-off garage with tie-down rails and awning. Turn key with dishes, silverware, pots and pans, and some blankets. Stored inside, non-smoking and very clean older owners. Or without any extras. Asking \$28,900 offers or will possibly consider trades. Call 406.265.0990.

1985 Versatile Blade

1985 Versatile 5000 blade, 35.5 ft. Asking \$2,500, call 406.378.3212.

Misc Items For Sale

Weight Bench with weights, \$300; Older piano; Bull Frog Hot Tub, needs repairs, \$200, Call 406.378.3212.

Tin Lizzie Sewing Machine

Tin Lizzie 18 Long arm sewing machine and 10-foot Gracie frame, \$5500 or best offer. Call 406.292.3663.

Steel Headache Rack

Steel headache rack for full-size Chevy pickup truck. Steel stock pen with full wood floor that fits full-size pickup bed (up sliding gate). Please call to inquire and schedule to view. Reasonable offers are encouraged. Call 406.390.3522.

RYOBI Miter Saw*

10" RYOBI Compound Miter saw in excellent shape. Call 406.759.5551.

Swap & Shop is a classified advertising section of the Triangle Communications and Hill County Electric websites and newsletters. It is maintained as a service to customers and communities wanting to buy, sell and announce non-commercial items. To have an ad included, simply enter all the pertinent information on the online form. An administrator will review the information within two business days and if approved, the ad will then appear. It will stay online for 60 days unless you notify us to remove or change it. It will also appear in any of the newsletters printed during that 60 day window. Triangle reserves the right to abbreviate ads and if the section is full, we will display ads on a first come, first-served basis. If you're unable to enter your ad online you may mail or e-mail it to us using the contact info inside the front cover of this magazine. Happy swapping and shopping.