



HILL COUNTY ELECTRIC NEWS & VIEWS

June 2021



1.877.394.7804  
hillcountyelectric.coop



Craig Gates
General Manager/CEO

CEO June Message

Note to Members: The June issue goes to print before the ballots will be counted. Results of the Board of Trustee elections will be posted on the HCE website (hcelectric.com) and on our Facebook page as soon as we receive them

from the law firm counting the ballots. They will also appear in the July HCE News & Views. Thank you.

HCE members should all have received the HCE Annual Update and a ballot in the mail last month. This year, HCE members were asked to vote for Trustees to represent HCE's Districts 4 (southern) and 5 (at-large). I hope you all had the time to read the nominees' bios in the update booklet or watch their videos on Facebook.

One of the most important Cooperative Principles for a cooperative is Democratic member control. Cooperatives are controlled by their members.

The Board of Trustees you elect are members just like you, but now they will be participants in the direction for your cooperative. Board Trustees are also accountable to the members of the cooperative they represent. Learning about the electric industry and how HCE operates will be important for new Trustees. I thank all the members who have chosen to run for the open Trustee positions.

Chief Financial Officer (CFO), Mark Majeres, also reported in the update booklet that 2020 was another solid year financially for HCE. HCE was even able to pay out to our members capital credits in the sum of \$568,096. That amount included estate retirements and a general retirement. Check out the booklet for the complete financials.

Thank you to our members for being patient as we all work through this crazy time. Last June, we were hoping COVID had run its course. As we all know, that was not the case. When it is determined safe, we will look at re-opening our office.

HCE 2021 Scholarship Winners

Congratulations to Shayla Borlaug, Katherine Bold, Hope Gasvoda and Lily Surber.

We are very proud of the Class of 2021!



Lily Surber, Tell Us Your Story Scholarship



Hope Gasvoda, MECA Scholarship



Katherine Bold, HCE Scholarship



Shayla Borlaug, Basin Electric Cooperative Scholarship

HCE Happenings

Last month, Hill County Electric (HCE) had approximately 425 account hours affected by outages. Of these hours:

404

Planned for maintenance or construction

17

Misc. or unknown

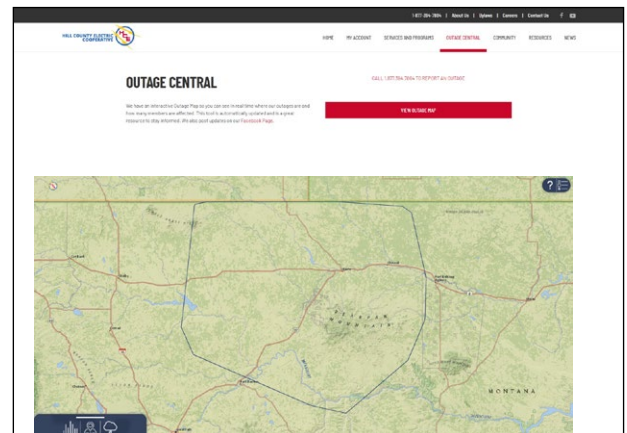
4

Equipment/Material failure

This compares to 901 hours one year ago.

Did You Know...

HCE now has an interactive Power Outage Map! Visit Outage Central on our website (www.hcelectric.com) to see in real-time where our outages are and how many members are affected.



UNDERSTANDING THE SEVEN COOPERATIVE PRINCIPLES

Cooperatives around the world operate according to the same set of core principles and values, adopted by the International Co-operative Alliance. These principles are a key reason why America's electric cooperatives operate differently from other electric utilities, putting the needs of our members first.



VOLUNTARY AND OPEN MEMBERSHIP

Membership in a cooperative is open to all people who can reasonably use its services and stand willing to accept the responsibilities of membership, regardless of race, religion, gender or economic circumstances.



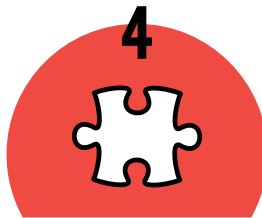
DEMOCRATIC MEMBER CONTROL

Cooperatives are democratic organizations controlled by their members, who actively participate in setting policies and making decisions. Representatives (directors/trustees) are elected among members and are accountable to them. In primary cooperatives, members have equal voting rights (one member, one vote); cooperatives at other levels are organized in a democratic manner.



MEMBERS' ECONOMIC PARTICIPATION

Members contribute equitably to, and democratically control, the capital of their cooperative. At least part of that capital remains the common property of the cooperative. Members allocate surpluses for any or all of the following purposes: developing the cooperative; setting up reserves; benefiting members in proportion to their transactions with the cooperative; and supporting other activities approved by the membership.



AUTONOMY AND INDEPENDENCE

Cooperatives are autonomous, self-help organizations controlled by their members. If they enter into agreements with other organizations, including governments, or raise capital from external sources, they do so on terms that ensure democratic control as well as their unique identity.



EDUCATION, TRAINING AND INFORMATION

Education and training for members, elected representatives (directors/trustees), CEOs and employees help them effectively contribute to the development of their cooperatives. Communications about the nature and benefits of cooperatives, particularly with the general public and opinion leaders, help boost cooperative understanding.



COOPERATION AMONG COOPERATIVES

By working together through local, national, regional and international structures, cooperatives improve services, bolster local economies and deal more effectively with social and community needs.



CONCERN FOR COMMUNITY

Cooperatives work for the sustainable development of their communities through policies supported by the membership.

THESE ARE
THE WORDS
WE LIVE BY.



The National Rural Electric Cooperative Association (NRECA) is the national service organization for more than 900 not-for-profit rural electric cooperatives and public power districts providing retail electric service to more than 42 million consumers in 48 states and whose retail sales account for approximately 12 percent of total electricity sales in the United States. Learn more at electric.coop

SWAP AND SHOP

Welcome to our Swap and Shop! Feel free to post and find classifieds from other members!

Swap & Shop is a classified advertising section of the Triangle Communications and Hill County Electric websites and newsletters. It is maintained as a service to customers and communities wanting to buy, sell and announce non-commercial items. To have an ad included, simply enter all the pertinent information on the online form. An administrator will review the information within two business days and if approved, the ad will then appear. It will stay online for 60 days unless you notify us to remove or change it. It will also appear in any of the newsletters printed during that 60 day window. Triangle reserves the right to abbreviate ads and if the section is full, we will display ads on a first come, first-served basis. If you're unable to enter your ad online you may mail or e-mail it to us using the contact info inside the front cover of this magazine. Happy swapping and shopping!

Mercury Boat Motor

Mercury outboard boat motor. 6HP, 4 cycle, long shaft. Asking \$1,200, call 406.547.2184.

Farm For Sale

74.87 acre farm 1 mile east of Chinook on US Hwy 2. Includes two houses, detached garage/shop, large barn and corral with misc. buildings. The site has 3 irrigated fields totaling 40.28 acres. The farm has city water and natural gas. Call 406.357.2572.

1974 T600B Galion Grader

Grader with a 14-foot blade, 186 HP 1HDT466 engine, hydrostatic with 10,374 hours. Asking \$17,000, call 406.376.3268.

1969 AC-HD11E Dozer

Dozer has hydraulic manual tilt, angle. Includes ripper with 3 teeth, 6-speed transmission, and has 7110 hours. Asking \$15,000, call 406.376.3268.

Antique Caterpillar Grader

Caterpillar pull-type grader from late '40s. All manual with a 12-footblade. Asking \$1,750, call 406.376.3268.

96 Yukon Parts

Doors (passenger side). Call 406.547.2187.

Items For Sale

1982 Ford Ranchero, needs some work and rear bumper replaced. Asking \$5,000. Roll-top desk in good condition, asking \$1,400. Call 406.622.5417.

Wanting To Buy

1955-1958 Chevy car or pickup for project. Call 406.326.2287.

Toro Titan MX Mower

Model 6080 zero turn mower with rollover protection with 26 HP engine. Ready to go, call 406.378.3212.

Harlowton Home For Sale

Three bedroom home, one bath home for sale in Harlowton. Two-story with basement for storage, new gas furnace on a nice corner lot. \$88,000 firm, contact owner for more details and possible owner contract with a down payment, 406.632.5725.

Rentals in Harlowton

Multiple houses and apartments for rent in Harlowton. Prices vary, no pets, no smoking. Call 406.632.5725.

Delta Platinum Edition

Unisaw

10-inch unisaw with 50-inch commercial Biesemeyer fence with mobile base. In good condition, includes extra accessories. Asking \$1,500 or best offer, call 813.453.1787.

Misc Items

1985 Versatile 35.5-foot blade; pressure washer; portable contractor air compressor; receiving hitch; like new heavy-duty toolbox for size pickup and weight bench plus weights. Call 406.378.3212 for prices and more details.

Mayrath Grain Auger

27-foot, 6-inch Mayrath grain auger with 5HP electric motor. Call 406.378.3212

Property For Sale in Loma

Opportunity for small-town living with wildlife and fishing access. For sale at a bargain price, 4 lots and 4 buildings originally housing a second-hand and antique shop. Call 406.739.4361.

Stainless Steel Drop Visor

Twelve-inch stainless steel drop visor comes with brackets. Fits a 2009 Kenworth or newer. Asking \$150 but will consider reasonable offers. Call 406.357.4282.

1967 Ford Thunderbird

This classic car runs great, has a clean interior, and is in good condition with some minor bodywork required. Asking \$8,000 but will consider reasonable offers. Call 406.357.4282.

Custom Built Kitchen Island

Island dimensions are 29 1/2" x 71 1/2" x 36" with a 2" maple butcher block top over an oak base with casters. The island has a large center storage area with an adjustable shelf that is accessible from both sides, four pull-through drawers, and a bookshelf on one end. Asking \$1,000, call 307.277.5782.