



HILL COUNTY ELECTRIC NEWS & VIEWS

Feb 2020



1.877.394.7804  
hillcountyelectric.coop



Craig Gates
General Manager/CEO

CEO February Message

We are already into the second month of 2020. I hope the new year has been good to you so far. During the winter months it is important to stay safe and warm.

In the Northern Hemisphere winter includes the months of December, January and February. Mother Nature sometimes has a different idea for Montana. I think we all have memories of early and late winter storms that reminded us it can snow just about any time of year in Montana.

Everyone at Hill County Electric (HCE) would like to remind you how important it is to be safe around electricity. Here are a few tips on how to stay safe and warm this winter:

Don't overload outlets. Overloaded outlets are one of the leading causes of residential fires. When connecting appliances, avoid using extension cords and multi-outlet converters; plug them directly into the wall outlet.

Inspect your power cords. If the protective coating on a wire is stripped away, replace the cord. Exposed wiring is very dangerous.

Never leave space heaters unattended. Turn off space heaters before leaving a room and make sure they are at least three feet away from flammable items. There is an article on the next page that covers space heater safety in more depth, please take the time to review the safety information.

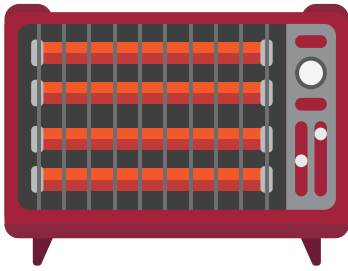
Inspect heating pads and electric blankets. These two items cause almost 500 fires every year. Inspect electric blankets and heating pad for dark, charred or frayed spots. Also check the cords for any damage. Consider replacing electric blankets and heating pads that are over 10 years old and never fold them when in use.

Portable generator safety. Unfortunately, winter storms can cause power outages. Remember to be safe if you use a portable generator to power your home. Never connect a standby generator into your home's electrical system. Before you plug in appliances, first start the generator. Plug appliances directly into the outlet provided on the generator. Run the generator in a well-ventilated area outside of the home. Keep the generator away from garages, doors, windows and vents, as the carbon dioxide it generates is deadly.

If you are interested in a standby generator rather than a portable generator, HCE offers an automatic standby generator solution. A selection of Generac generators are available through our supply warehouse in Havre and our Master Electrician can professionally install them for you. The generator sits outside your home the same as a central air conditioner and consists of the generator and transfer switch. If your power goes out, the generator comes on automatically. Stop by our warehouse in Havre or give us a call at 406-394-7804 if you are interested in a Generac generator.

And always, STAY SAFE and STAY WARM!

Tips on space heater safety



Space heaters can be a good alternative for those who want to warm one area of their home without turning up the thermostat on the central heating system. However, space heaters are also responsible for 32 percent of house fires, according to the National Fire Protection Association. If you are planning to use a space heater in your home this winter, review these tips below to keep you, your family and your property safe.

Here are some things to keep in mind when using space heaters:

- Parts like metal grating can be hot to the touch and may burn anyone who gets too close. Make sure you purchase a heater that is cool to the touch and has guards over the coils just in case little fingers get too close.
- It is safest to leave the heater on a level floor on a nonflammable surface. Keeping the space heater on the floor can keep it from falling over, preventing fire hazards.
- Space heaters and bathrooms are not a good combination, unless the heater is designed for bathroom use. Moisture can damage the heater.
- The most important rule about space heater placement is the three-foot rule. Whether you are using the heater in the bedroom, living room or kitchen, space heaters should always be kept three feet away from flammable materials and out of the way of children and pets.
- Auto shutoff can be a lifesaver. If you currently own a space heater without auto shutoff, consider purchasing a heater with this important safety feature.
- You should **never** use an extension cord when plugging in a space heater as it can cause overheating.
- The space heater should be plugged directly into a wall outlet, and should be the **only** thing plugged in to the wall outlet.
- Never leave a heater unattended while in use. If you are leaving your home or going to bed, make sure to unplug the heater.
- Portable space heaters **are not** intended for use in unattended outbuildings or rooms. Look for heaters specifically designed for that purpose.
- There is no difference in an electric heater that claims to be high efficient vs. one that is just an electric heater. Electric heat is 100% efficient.
- One 1500 Watt electric heater would cost about \$0.15 per hour to operate, or \$1.50, for 10 hours.

Keep these tips in mind and make sure to follow the manufacturer's instructions to keep safe this winter.

HOME BACKUP POWER
NO POWER? NO WORRIES.

Generac generators are available through HCE.

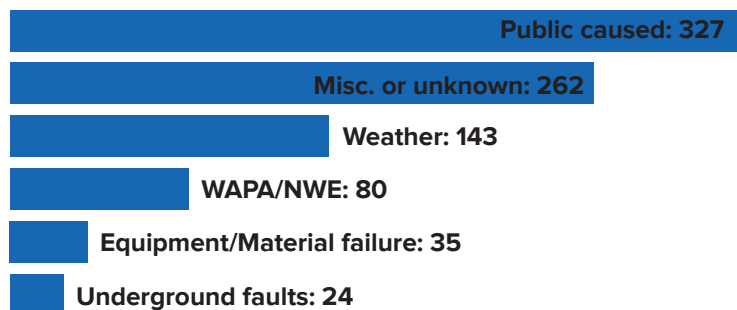
HILL COUNTY ELECTRIC COOPERATIVE

HCE Happenings

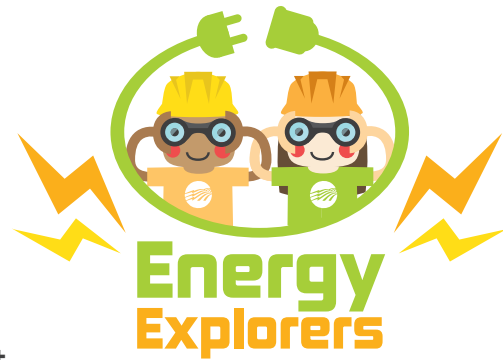
Last month, Hill County Electric (HCE) had approximately 871 account hours affected by outages.

This compares to 1,186 hours one year ago.

Of these hours:



ELECTRICAL EQUIPMENT WORD SCRAMBLE

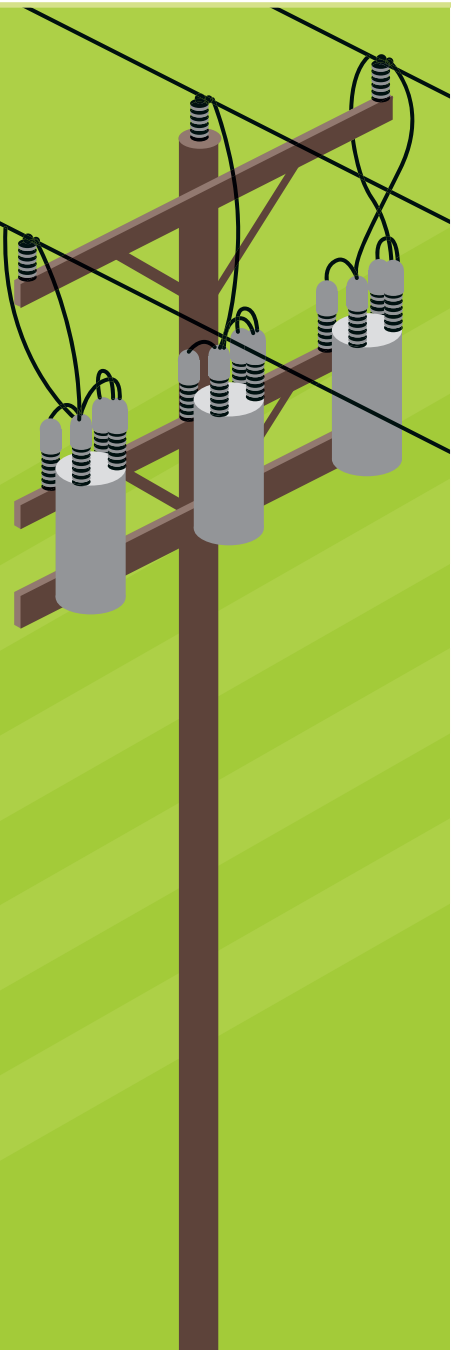


Electric co-ops use a variety of equipment to make sure you and your family receive reliable electricity. Can you unscramble the equipment terms below?

Use the provided clues for help, and double check your work in the answer key below.

- 1. ORNSTAMREFR** _____
These can look like large metal cans on top of utility poles or big green boxes on the ground. They are used to reduce the voltage of electricity, making it safe for use in your home.
- 2. OERPW NSLIE** _____
These can hang overhead or be placed underground. They carry electricity from where it's generated to homes and businesses in your community.
- 3. OUTASBSNTI** _____
This is an electrical facility that contains equipment for controlling the flow of electricity.
- 4. RCTLECIE ERMTE** _____
These devices are typically found outside the home and measure the amount of electricity you use.
- 5. CBUTKE KTRUC** _____
Lineworkers use these types of vehicles to reach power lines and poles when making repairs and updates to the electrical system.

Answer Key: 1. TRANSFORMER 2. POWER LINES 3. SUBSTATION
4. ELECTRIC METER 5. BUCKET TRUCK



SWAP AND SHOP

Welcome to our Swap and Shop! Feel free to post and find classifieds from other members!

Swap & Shop is a classified advertising section of the Triangle Communications and Hill County Electric websites and newsletters. It is maintained as a service to customers and communities wanting to buy, sell and announce non-commercial items. To have an ad included, simply enter all the pertinent information on the online form. An administrator will review the information within two business days and if approved, the ad will then appear. It will stay online for 60 days unless you notify us to remove or change it. It will also appear in any of the newsletters printed during that 60 day window. Triangle reserves the right to abbreviate ads and if the section is full, we will display ads on a first come, first-served basis. If you're unable to enter your ad online you may mail or e-mail it to us using the contact info inside the front cover of this magazine. Happy swapping and shopping!

Ali Arc Aluminum Front Bumper

Bumper has push bar and lights. Fits 2008-2010 Ford F-450 and 550 Super Duty truck, in good condition. Asking \$600, call 406.397.3333.

2014 Flat Bed Trailer

2014 PJ 30 foot flatbed trailer. Has 10 foot hydraulic dovetail, dual wheel 16,000 pounds, tandem axles and air brakes. Excellent condition, asking \$14,000. Call 406.397.3333.

1994 Ford Truck

1994 Ford L-900 truck cat 3176 with 370 horsepower motor, a 9-speed transmission and 4-way lockers. Good condition, asking \$9,000. Call 406.397.3333.

1995 John Deere

1995 John Deere 8100 MFWD tractor with power shift, 100 PTO, 3-point hitch and 7817 hours. In good condition, asking \$47,000. Call 406.397.3333.

Wanted to Buy

Looking to buy a 1955 to 1958 Chevy car or 1/2-ton truck. Call 406.326.2287.

Sewing Machine and Cabinet

Pfaff sewing machine and cabinet. Asking \$100, call 406.739.4476.

Wanting To Buy

Looking to purchase a small upright freezer in the Havre area. Call 406.395.4581.

1967 Ford Thunderbird

Two-door classic vehicle with a 390 engine and 90,000 actual miles. It has new tires plus an excellent interior but needs some minor bodywork and paint. Asking \$7,000, call 406.357.4282.

Leer Topper

2016 Leer topper off a 2006 short bed Chevy. Topper is taller in the back to make lots of room, like-new condition. Can send pictures, call 406.379.2605.

Electric Service Loop

200-amp electric service with loop, mast and wires. Located in Harlem area. Asking \$150, call 406.353.4462.

Tractors and More

IHC Industrial tractor with loader, T9 IHC Caterpillar with dozer and grapple bucket (older one), 990 David Brown tractor with loader and Suzuki 200 2x4 four-wheeler (as is). Call 406.739.4361 evenings for more details.

Misc Items

For sale a post pounder, three-point cement mixer and pickup box off 2001 pickup. For pricing and more information call 406.945.0905. 2016 Dodge Ram (Price Dropped) 2016 Dodge Ram 1500 crew cab with four-wheel drive, a 5.7 Hemi, traction control and back up camera, 49,540 miles. Runs great and is powerful. Price reduced from \$26,900 to \$22,499, call 406.390.6946. No texts, please.

Hay

Hay barley net wrap round \$70 a ton. Grass alfa/sanfoin mix round net wrap \$65/2nd cutting. Alfalfa net wrap round \$100. Grass hay net wrap \$80. Alfalfa grass small square bales \$3 a bale 406.473.2202 or 406.671.6633.

Pontiac Bonneville

1997 Pontiac Bonneville extremely well maintained, asking \$5,000 or best offer. Call 406.372.3276.

F350 Ford Flatbed

1994 F350 Ford Flatbed pickup 4x4 with manual transmission. Odometer reads 190,383 (as is). Asking \$3,500, call 406.654.2784.

Toolboxes and More

Two diamond plated toolboxes for short box pickup, one Craftsman workbench toolbox with multi drawers. Also, a heavy-duty electric start snowblower and Ford Ranger pickup topper. Please call 406.547.2450 for more information and prices.

Grass Alfalfa Hay

About 500 bales grass alfalfa hay at 1400 lbs. Excellent quality, no rain. \$90 per ton. Call 406.547.3549.

Alfalfa and Grass Hay

Two kinds of hay for sale: alfalfa/grass hay 1400 lbs for \$90/ton and grass hay 1375 lbs for \$80/ton. Call or text 406.366.3288.

Fertilizer Spreader

2015 BBI Liberty fertilizer spreader. Pull behind model, like new. Asking \$25,000, call 406.654.4031.

Gold Mining Equipment

Keene brand mining equipment for sale. Brand new, never used. Call 406.473.2266 for more information.

Portable Building To Move

14'x24' Amish built storage shed for sale, you move. Brown with a green roof. Wired for electricity, has two (2) 8 ft fluorescent lights, steel adjustable shelving and redwood porch. Asking \$7,850 for everything (was \$8,500 brand new). Call 406.473.2266.

Vintage Wood Stove

Vintage wood stove for sale. In very good shape, perfect for a cabin or a shop. A bargain at \$100. Call 406.622.3605 or 406.788.2717.

Aluminum Concrete Forms

140 ft. of 8 ft. slightly used concrete forms. Plus, 700 ft. of well used concrete forms. Some with brick pattern. Asking \$25,000, call 406.292.3662.

2005 John Deere Disc Air Drill

Air drill with mid-row banders, 430 bu 1910 cart. Seed monitors on all towers with all new discs and fertilizer towers. Asking \$64,500, call 406.292.3662.

Wilray Fuel Tank

2014 Wilray double wall fuel tank. Holds 10,000 gallons, double wall fuel tank. Has some external cosmetic damage, but repaired and ok'd by certified welder. Never had fuel in it, no pump. Asking \$10,500, call 406.292.3662.