



HILL COUNTY ELECTRIC NEWS & VIEWS

1.877.394.7804  
hillcountyelectric.coop

May 2018



Manager's Message

By Craig Gates, General Manager/CEO



May is annual meeting time for Hill County Electric Cooperative (HCE) and I hope you plan to attend HCE's 73rd Annual Meeting of Members on Saturday, May 12th. The meeting will take place in the Student Union Building on the campus of MSU-Northern in Havre. Be part of what

help ensure that this cooperative will be around for the future.

I would like to take a moment to thank our team, in the office and out in the field, who work hard to keep the lights on for our members every day. At HCE, we are responsible for keeping 3,114 miles of line, across five counties, working to bring power to our members 24/7. We do not take this responsibility to our members lightly. You the members, are the owners of HCE, we work for you.

HCE provides extremely reliable service, but events out of our control do cause outages. To serve our members' needs better, HCE and our Board of Directors are excited to announce we are now offering an automatic home standby generator solution to our members. Generac generators will be available through HCE's supply warehouse in Havre and can be professionally installed by HCE's Master Electrician. Please stop by the HCE warehouse or call them at 394-7804, if you have any questions or are interested in purchasing a generator. They would be glad to assist you.

There is another reason you won't want to miss this year's meeting. HCE members who attend will be entered in the Grand Prize drawing for \$500 off a Generac generator installed by HCE or a \$500 bill credit. There will be prize

drawings throughout the meeting and 'Luck of the Draw' scholarship drawings for those college-age students in attendance with a parent or guardian who is a HCE member.

Registration begins at 9:00 a.m. with the business meeting called to order at 10:00 a.m. Lunch will follow, along with prize drawings. Watch your mail for the annual meeting notice which has all the details and circle May 12th on your calendar. Hope to see you there!



HCE members who attend will be entered in the Grand Prize drawing for \$500 off a Generac generator installed by HCE or a \$500 bill credit.

Mobile Substation Training



Linemen from Big Flat, Marias River and NorVal Electric Cooperatives were in Havre recently for training on setting up mobile substations. The mobile substations are available to borrow in the case of an emergency. This hands-on training allowed the crews to learn how to safely deploy the substations.



HCE Happenings



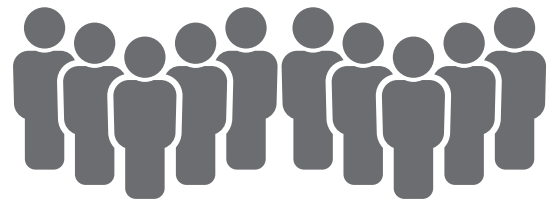
Last month, Hill County Electric (HCE) had approximately 1,755 account hours affected by outages. Of these hours:

- Equipment/Material failure: 118
- Weather: 922
- Underground faults: 127
- WAPA/NWE: 316
- Planned maintenance or construction: 246
- Misc or unknown: 26

This compares to 184 hours one year ago.

HCE crews changed out a 3-phase served out of the West Joplin substation on March 16th.

7 COOPERATIVE PRINCIPLES



VOLUNTARY & OPEN MEMBERSHIP

Cooperatives are voluntary organizations open to all persons able to use their services and willing to accept the responsibilities of membership, without gender, social, racial, political, or religious discrimination.



DEMOCRATIC MEMBER CONTROL

Cooperatives are democratic organizations controlled by their members, who actively participate in setting policies and making decisions. The elected representatives are accountable to the membership.



MEMBERS' ECONOMIC PARTICIPATION

Members contribute equitably to, and democratically control the capital of their cooperative. At least part of that capital is the common property of the co-op.



EDUCATION, TRAINING & INFORMATION

Co-ops provide education and training for their members, elected representatives, managers, and employees so they can contribute effectively to the development of their co-ops.



COOPERATION AMONG CO-OPS

Cooperatives serve their members most effectively and strengthen the cooperative movement by working together through local, regional, national, and international structures.



CONCERN FOR COMMUNITY

While focusing on member needs, cooperatives work for the sustainable development of their communities through policies accepted by their members.

AUTONOMY & INDEPENDENCE

Co-ops are autonomous, self-help organizations controlled by their members. If they enter into agreements with other organizations, including governments, they do so on terms that ensure democratic control by their members.



Avoiding The Energy Rush



Did you know that when you use electricity often matters as much as how much electricity you consume?

It's no surprise that electricity use fluctuates throughout the day based on consumer demand, and electric co-ops must be able to provide enough electricity to meet the energy demands of their members during times of highest energy use, also known as "on-peak hours." Early-morning hours, when people often start their day, and evening hours, when people return to their homes after work, are common times for on-peak hours. To reduce peak energy demand and save money, many electric co-ops have created a time-of-use rate program to encourage electricity use during off-peak hours—when energy is less expensive to provide. Similar to saving money by attending a matinee, you can keep more money in your wallet simply by using electricity during an off-peak time period. Hill County Electric (HCE) has not implemented demand billing yet, but we want to make sure our members understand fully how it will work before we make any changes.

Using less on-peak power means lower costs for HCE—and could ultimately, lower rates for members. Electric rates based on time of use offer consumers the ability to lower their electricity costs without reducing the amount of electricity used. By performing some of your daily chores, like running the dishwasher or doing laundry during off-peak hours, you can save on your utility bill. In a similar vein, plug electronic equipment, such as computers, printers, TVs and power tools into a power strip, then turn it off during peak hours.

You can also put technology to work for you. If you have a programmable thermostat, adjust the settings so your heating/cooling system syncs up with the off-peak rate periods. Use automatic timers to run hot tubs, water heaters and other appliances in the same way.

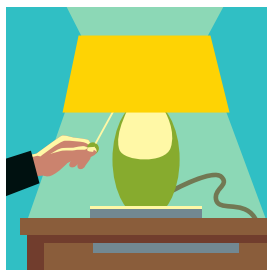
Saving energy can be simple. Remember, by shifting your energy use to off-peak times, you have the power to save on your monthly energy bill. To learn more about why time of use matters, visit our website at hillcountyelectric.coop/demand-metering.

Change Habits to BEAT THE PEAK

You can beat the peak (and save money!) by decreasing your power use when energy demand and prices are at their highest. Here are a few tips to help you get started:

Laundry for Less:

Full loads mean fewer cycles, and washers and dryers run in the late evenings add less heat and humidity to the home. Energy can cost less outside of peak hours.

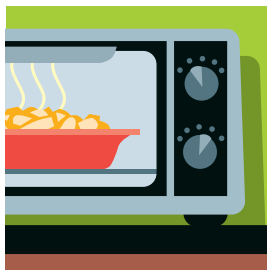


Cool Off/Calm Down:

Turn off unnecessary lighting and electronics that generate heat, resist the urge to turn down the thermostat and remember, lower fan settings use less energy.

Intramural Competition:

Online gaming with each active player using their own computer, display, gaming console and internet connection gets pricey. Play each other at home on one screen and save.



Countertop Convenience:

Range or oven cooking can really warm up a kitchen. Microwaves, convection ovens, induction cooktops, Crock-Pot® and toaster ovens put more cooking heat where you need it.

Swap & Shop



SWAP & SHOP is a classified advertising section of the Hill County Electric and Triangle Communications websites and newsletters. It is maintained as a service to customers and communities wanting to buy, sell and announce non-commercial items. To include an ad, go to itstriangle.com/swap-and-shop and complete the online form. Administrators will review the information within two business days and if approved, the ad will appear on the website. It will stay online for 60 days unless you notify us to remove or change it. It will also appear in any of the HCE & Triangle newsletters printed during that 60 day window. HCE and Triangle reserve the right to abbreviate ads. If the section is full, we will display ads on a first come, first-served basis.

1 Ton Chevy C-30 4WD

4-speed manual transmission, 8' mardow service body, 200-gal aluminum fuel tank w/electric fuel pump and 158K miles. Nice shape. Asking \$5,000, call 406.397.3333.

5 Concord Model 4012

40' with 12" spacing air drill includes model 3400 cart, 3" carbine tips, new monitor and electrical. Asking \$23,000, call 406.397.3333.

Antique Wooden Treadmill

Antique wooden treadmill, electrically run. Make an offer, call 406.374.2302.

Accordions For Sale

One good used Camillo I accordion with case and one small used Camillo accordion. Call 406.622.3605.

Auger Sensor System

Wireless full bin auger sensor system for sale, never been used. Call 406.355.4932.

Drapes For Sale

Two sets of freshly cleaned drapes (184 x 90 and 150x 82) with sheers and rods. Call 406.355.4932.

2001 Saab SW

V-6 with low miles, asking \$1,500. Call 406.326.2287.

Ranch Style Home For Sale in Rudyard

3 Bed + 2 nonconforming and 2 bath on corner lot. 3072 sq. ft. total with fireplace, gas heat, finished basement, large rec room, attached garage, covered patio, detached heated workshop and off street parking. Dishwasher, refrigerator, washer, dryer and freezer included. U/G sprinklers and private backyard. Asking \$115,000. Call 406.292.3553 or 406.390.4860.

Galvanized Water Tank

2,000 gallon, oval, 16 feet long. No leaks, asking \$500. Call 406.357.4282 if interested.

1992 John Deere 9600 Combine

Has 30 ft header, separator hours 2,625, engine has 3,875 hours. Located in Hingham, MT. Asking \$22,500, call 406.262.3169 or 406.397.3204 (ask for Eddie).

1993 John Deere 8870 Tractor

GPS, auto steer, 8,560 hours, 350 Horsepower, dual tires (520/85R/42). Located in Hingham, MT. Asking \$36,500, call 406.262.3169 or 406.397.3240 (ask for Eddie).

Flexi Coil Air Drill 1720 Cart

The cart has a 5000 38 foot air drill with 12 inch spacing, single shoot, 3 inch steel wheels and monitor. Located in Hingham, MT. Asking \$22,500, call 406.262.3169 or 406.397.3204 (ask for Eddie).

2000 Merrit Livestock Trailer

This 53 ft. spread axle has new tires, good floors and is ready to work. Asking \$29,000, this is a must see to appreciate trailer. Call 406.357.4282.

Airplane For Sale

For more information and pricing, call 406.355.4591.

Agricultural Items For Sale

2009 Rogator 1286c, 100 ft. sprayer, Mod. C9, Cat Engine, 722 hrs, 1200 gallon. 1996 New Holland 9682 375 hp tractor. 2002 John Deere air hole drill, 53 ft. with 10" spacing. 1985 Versatile 5000 series, 35.5 ft. blade. Brandt-Hyd tailgate drill filler. Mayrath with 6x27 ft. treat auger. New Farm King 3 pt. harrow. Call 406.378.3212 for pricing.

Misc Agricultural Items For Sale

Cat forklift, mod V80c. Motorola 2 way radios. Bin sweep-wht heart 5.5 hp Honda motor. Wilray tender trailer- 20 ft. flatbed, tandem axle, beaver tail and bumper pull. Mixing cone with 30 gal. chemical. Drill press, portable contrt. air compressor and pressure washer. Call 406.378.3212 for pricing.

Lincoln Town Car Parts

1990-1993 Lincoln Town Car window regulators, front LH, part number 3553-1990L; 125-1685L and rear left, part number 3553-1991, 135-1686L. New and still in shipping boxes because project was abandoned. \$20 each or \$40 for the pair. Call 406.357.4282.

2017 Grain Vac Model 2700

116 hours. Excellent condition. Asking \$15,500, call 406.397.3333.

John Deere Tractor Model 8760

12-speed manual transmission, has 4K hours and good tires. Good condition. Asking \$32,000, call 406.397.3333.

